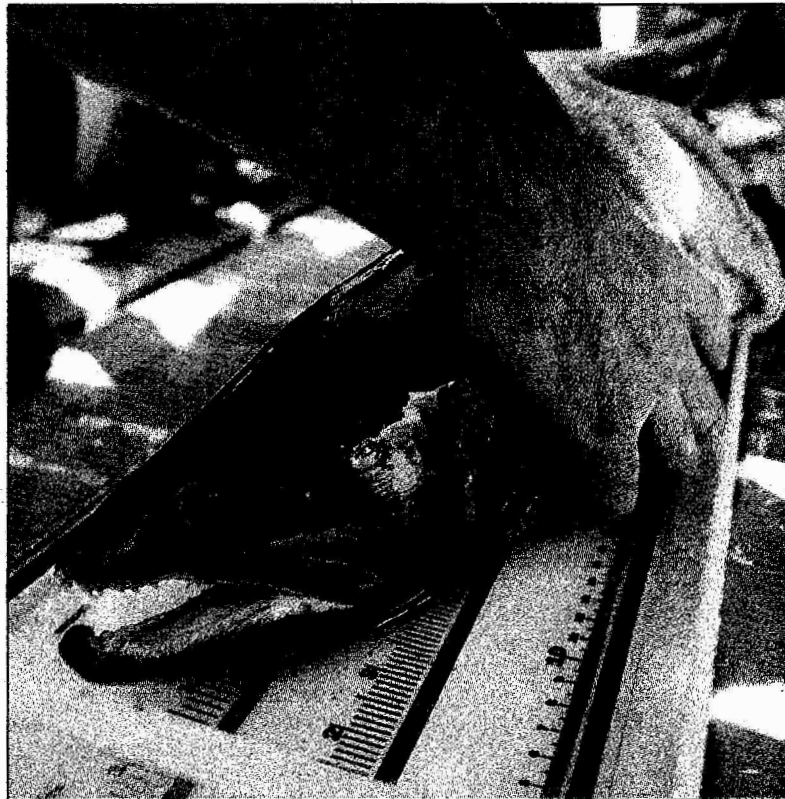


FISH GETS A HAND UP



RON BURDA — MERCURY NEWS

RESCUE OPERATION: A volunteer with the Alameda Creek Alliance puts a radio tracking device on a 26-inch steelhead trout, one of many the group has rescued from dams that stop them in Alameda Creek on their way up Niles Canyon from the ocean. The trout was released above the dams, and its route to the spawning grounds will be tracked.